

name:

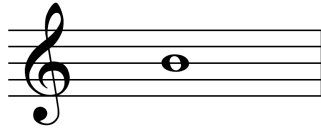
date:

— *Practice Exam Version 2* —
University of Massachusetts
Graduate Diagnostic Examination
in Music Theory (Jazz)

Make no marks on this page below this line

area	results
Rudiments <i>[1 point each]</i> 1 2 3 4 5 6 7 8 9 10	<i>[7 points needed to pass]</i>
Advanced chords and scales <i>[1 point per chord]</i> 11 12 13 14 15 <i>[1 point per scale]</i> 16 17 18 19 20	<i>[7 points needed to pass]</i>
Harmonic analysis <i>[20 points at 1 point per chord]</i>	<i>[14 points needed to pass]</i>

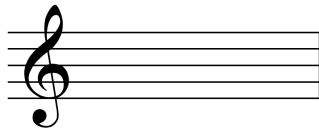
(1) Write the pitch that is an augmented fourth (A4) *below* the given pitch. [1 point]



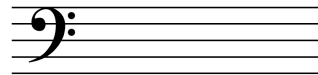
(2) Write the pitch that is a minor sixth (m6) *above* the given pitch. [1 point]



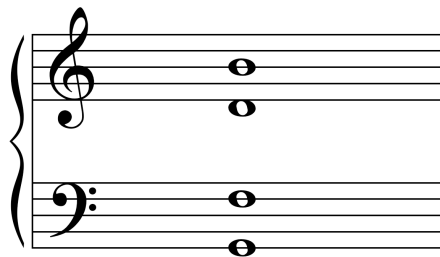
(3) Write an F diminished triad in first inversion. [1 point]



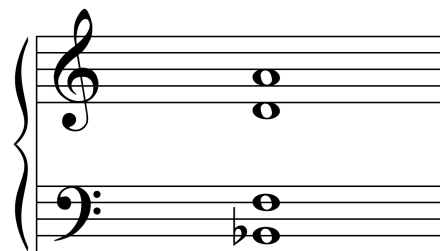
(4) Write a C-sharp minor triad in root position. [1 point]



(5) Add accidentals to the upper three voices of the following chord to form a major-major seventh chord. Do not add any accidentals to the bass note. [1 point]



(6) Add accidentals to the upper three voices of the following chord to form a half-diminished seventh chord. Do not add any accidentals to the bass note. [1 point]



(7) Add three pitches above the given pitch to complete the given figured bass.
[1 point]

(8) Add three pitches above the given pitch to complete the given figured bass.
[1 point]

(9) Here is a pitch:

Rewrite the pitch in each of the following clefs. Keep the pitch in the same octave.
[1 point]

(10) Here is an excerpt for Alto Saxophone in E-flat. This is the part the player reads.
Rewrite the excerpt at concert pitch in the proper octave on the staff below. [1 point]

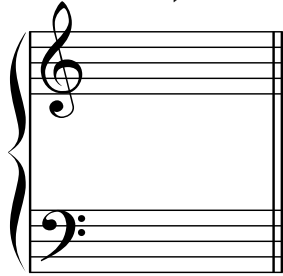
Andante sostenuto assai.

Alto Saxophone in E \flat

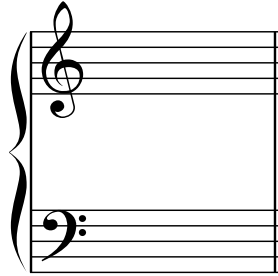
concert pitch

For Questions 11–15, spell the chord indicated. [1 point per chord]

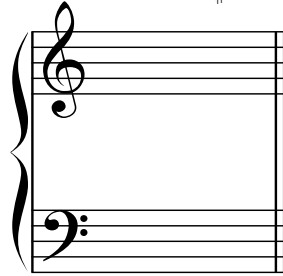
(11) $B^7(\sharp_{11}^{\flat}_9)$

A musical staff with a treble clef on top and a bass clef on the bottom. The staff is empty, intended for the student to write the chord spelling for B7(#11)9.

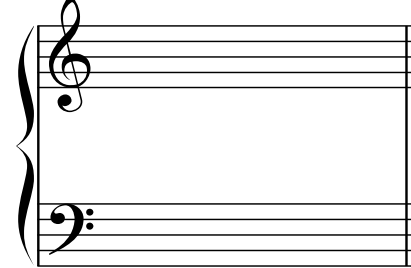
(12) $D^{\circ 7}$

A musical staff with a treble clef on top and a bass clef on the bottom. The staff is empty, intended for the student to write the chord spelling for D°7.

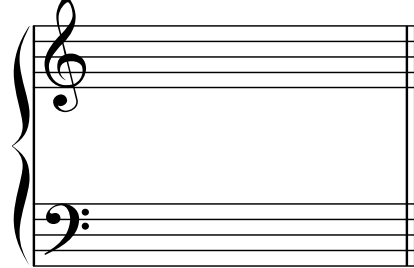
(13) $A^{\flat}maj^7(\sharp_{11}^{\flat}_9)$

A musical staff with a treble clef on top and a bass clef on the bottom. The staff is empty, intended for the student to write the chord spelling for Abmaj7(#11)9.

(14) $Gm^{(maj7)}$

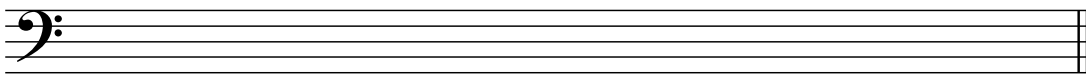
A musical staff with a treble clef on top and a bass clef on the bottom. The staff is empty, intended for the student to write the chord spelling for Gm(maj7).

(15) $C^{\sharp 7}(sus^4)$

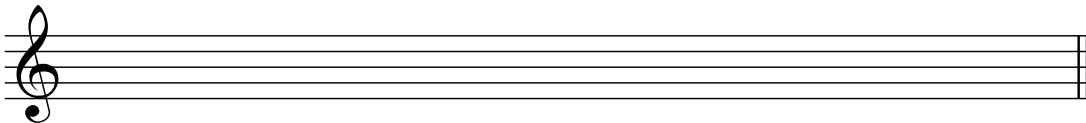
A musical staff with a treble clef on top and a bass clef on the bottom. The staff is empty, intended for the student to write the chord spelling for C#7(sus4).

For Questions 16–20, spell the scale indicated. [1 point per scale]

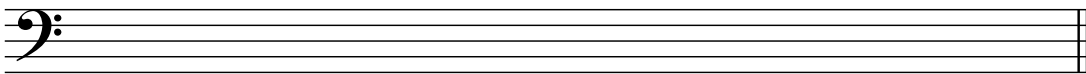
G Lydian

(16) 

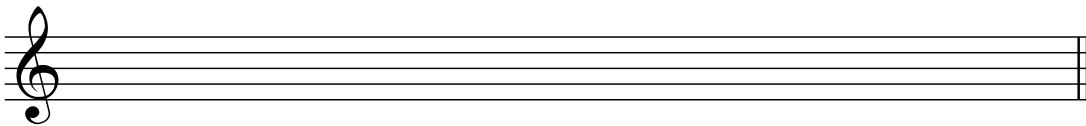
E Harmonic Minor

(17) 

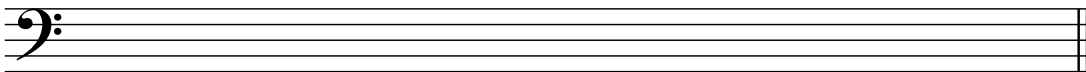
F Aeolian

(18) 

B-at Whole Tone

(19) 

D Mixolydian

(20) 

Analyze each harmony in the passage below. Identify Roman numerals, chord functions, and any modulations where appropriate. [20 points at 1 point per chord]

Am⁷(b⁵) D⁷ Gm⁷ Gm⁶ Cm⁷ F⁷(sus⁴) F⁷ B^bmaj⁷

8 E^bmaj⁷ Am⁷(b⁵) D⁷(b⁹) Gm⁷ C⁹

12 Fm⁷ B^b7 Am⁷(b⁵) D⁷(b⁹) Gm⁶ Dm⁷(b⁵) G⁷(b⁹)